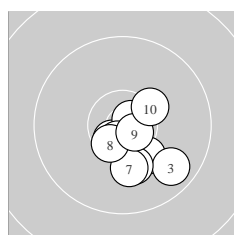
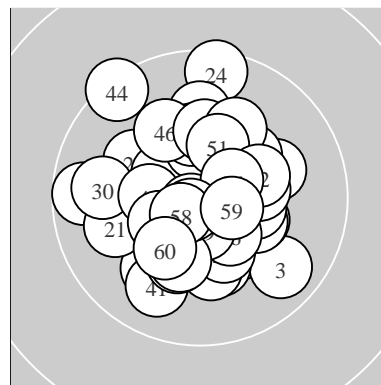
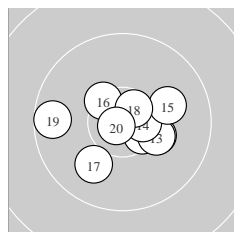


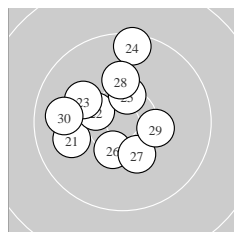
Ergebnis:	619.1	(594)						
Serien:	103.9	103.2	101.5	104.1	101.5	104.9		
Zähler:	54	6	0	0	0	0	0	0
Innenzehner:	32							
weiteste:	1219 (44), 1139 (24), 1043 (19)							
beste Teiler	94.8 (33.) 101.2 (55.) 109.4 (20.)							
Trefferlage	0.07 mm rechts, 0.27 mm hoch							
Streuwert	4.02, horizontal: 3.79, vertikal: 4.23							



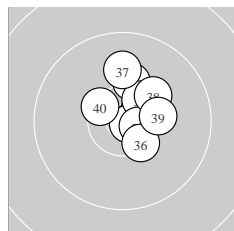
Serie 1:	10.6 *	10.2 ↘	9.8 ↘	10.2 ↓	10.8 *
	10.7 *	10.1 ↓	10.5 *	10.7 *	10.3 *
beste Teiler	149.6 (5.) 208.8 (9.) 230.5 (6.)				
Trefferlage	1.63 mm rechts, 2.74 mm tief				
Streuwert	2.94, horizontal: 2.79, vertikal: 3.08				



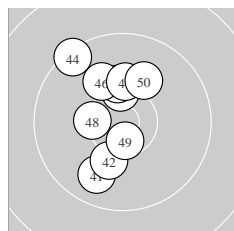
Serie 2:	10.3 ↗	10.5 *	10.3 ↗	10.6 *	10.1 →
	10.4 *	10.0 ↙	10.6 *	9.6 ←	10.8 *
beste Teiler	109.4 (20.) 262.0 (18.) 301.2 (14.)				
Trefferlage	0.59 mm rechts, 0.49 mm tief				
Streuwert	4.22, horizontal: 5.28, vertikal: 2.79				



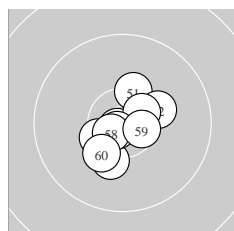
Serie 3:	10.0 ←	10.4 *	10.1 ↖	9.5 ↑	10.4 *
	10.4 *	10.3 *	10.2 ↑	10.3 *	9.9 ←
beste Teiler	404.7 (25.) 430.0 (22.) 437.4 (26.)				
Trefferlage	1.87 mm links, 1.50 mm hoch				
Streuwert	4.73, horizontal: 4.50, vertikal: 4.96				



Serie 4:	10.6 *	10.2 ↑	10.8 *	10.4 *	10.7 *
	10.4 *	10.0 ↑	10.2 ↗	10.3 →	10.5 *
beste Teiler	94.8 (33.) 239.4 (35.) 273.3 (31.)				
Trefferlage	1.86 mm rechts, 2.02 mm hoch				
Streuwert	2.86, horizontal: 2.43, vertikal: 3.24				



Serie 5:	9.9 ↙	10.2 ↓	10.4 *	9.4 ↖	10.2 ↑
	10.1 ↖	10.2 ↑	10.4 *	10.6 *	10.1 ↗
beste Teiler	281.3 (49.) 442.1 (43.) 451.5 (48.)				
Trefferlage	1.80 mm links, 2.18 mm hoch				
Streuwert	4.67, horizontal: 3.03, vertikal: 5.87				



Serie 6:	10.3 *	10.3 →	10.2 ↓	10.4 *	10.8 *
	10.5 *	10.8 *	10.7 *	10.6 *	10.3 ↙
beste Teiler	101.2 (55.) 134.8 (57.) 224.0 (58.)				
Trefferlage	0.06 mm rechts, 0.80 mm tief				
Streuwert	2.98, horizontal: 2.92, vertikal: 3.04				

Meyton Elektronik

ISSF Prone Women J – Wertung –

Junioren I weibl.

StartNr: 165

StandNr: 26

25. März 2018 8:49

Erdmann, Emmanuelle #165

FRA FRA – France

Unterschrift des Schützen

Meyton Elektronik