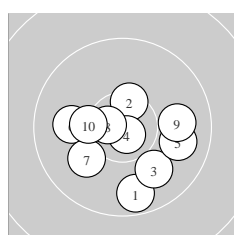
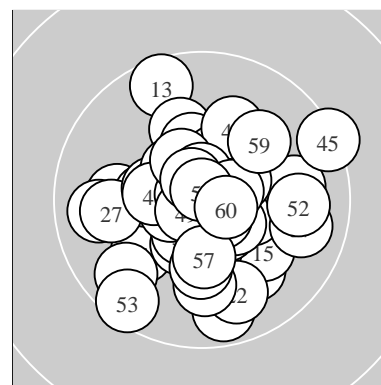
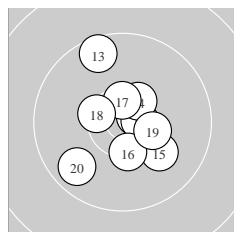


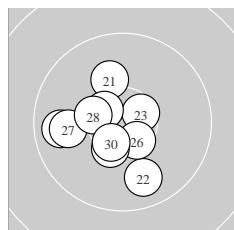
Ergebnis: **618.5** (587)
 Serien: 101.9 103.0 102.6 103.7 103.8 103.5
 Zähler: 47 13 0 0 0 0 0 0 0
 Innenzehner: 38
 weiteste: 1245 (45), 1119 (53), 1080 (13)
 beste Teiler 90.0 (58.) 125.7 (4.) 151.8 (46.)
 Trefferlage 0.25 mm rechts, 0.32 mm tief
 Streuwert 4.19, horizontal: 4.42, vertikal: 3.95



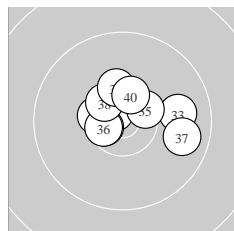
Serie 1:
 9.7 ↓ 10.5 * 10.0 ↘ 10.8 * 9.9 →
 10.0 ← 10.1 ↙ 10.7 * 9.9 → 10.3 *
 beste Teiler 125.7 (4.) 225.4 (8.) 389.2 (2.)
 Trefferlage 0.42 mm rechts, 1.83 mm tief
 Streuwert 4.82, horizontal: 5.53, vertikal: 4.00



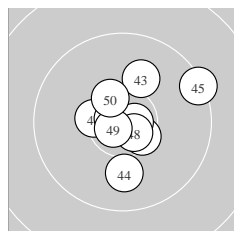
Serie 2:
 10.7 * 10.6 * 9.6 ↑ 10.5 * 10.1 ↘
 10.4 * 10.5 * 10.4 * 10.4 * 9.8 ↙
 beste Teiler 204.4 (11.) 256.7 (12.) 324.0 (17.)
 Trefferlage 0.31 mm rechts, 0.19 mm hoch
 Streuwert 4.40, horizontal: 3.93, vertikal: 4.83



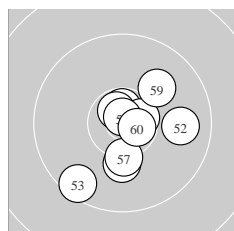
Serie 3:
 10.1 ↑ 9.9 ↓ 10.6 * 10.5 * 9.8 ←
 10.5 * 9.9 ← 10.4 * 10.4 * 10.5 *
 beste Teiler 302.7 (23.) 323.3 (24.) 342.8 (26.)
 Trefferlage 2.19 mm links, 0.93 mm tief
 Streuwert 4.07, horizontal: 4.21, vertikal: 3.93



Serie 4:
 10.7 * 10.4 * 9.9 → 10.6 * 10.5 *
 10.6 * 9.8 → 10.5 * 10.3 * 10.4 *
 beste Teiler 172.7 (31.) 280.1 (34.) 298.2 (36.)
 Trefferlage 0.74 mm rechts, 1.24 mm hoch
 Streuwert 3.64, horizontal: 4.63, vertikal: 2.25



Serie 5:
 10.4 * 10.5 * 10.1 ↑ 10.0 ↓ 9.4 →
 10.8 * 10.7 * 10.7 * 10.7 * 10.5 *
 beste Teiler 151.8 (46.) 168.3 (49.) 177.0 (47.)
 Trefferlage 1.16 mm rechts, 0.41 mm hoch
 Streuwert 4.13, horizontal: 4.23, vertikal: 4.04



Serie 6:
 10.7 * 9.9 → 9.6 ↙ 10.6 * 10.7 *
 10.2 ↓ 10.3 * 10.8 * 10.0 ↑ 10.7 *
 beste Teiler 90.0 (58.) 205.2 (55.) 222.6 (60.)
 Trefferlage 1.09 mm rechts, 1.02 mm tief
 Streuwert 4.19, horizontal: 4.02, vertikal: 4.35

Meyton Elektronik

ISSF Prone Women J – Wertung –

Junioren I weibl.

StartNr: 1432

StandNr: 22

25. März 2018 11:36

Schladebach, Kim #1197

GER-LLZBW GER – LLZBW

Unterschrift des Schützen

Meyton Elektronik